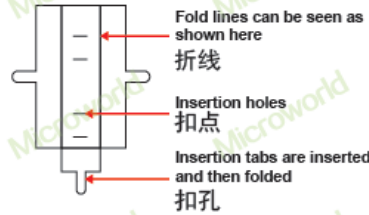
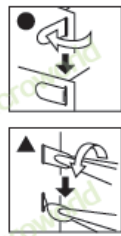


## To create the best connections 组装基本步骤示意图

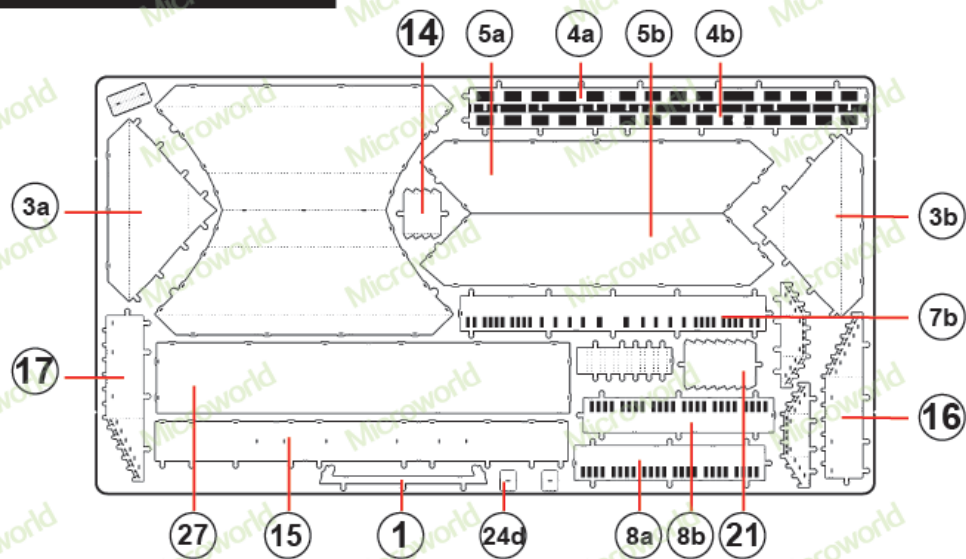
- Insert tab and bend 90° degrees for most visible areas
- 插入扣孔，平折90°
- ▲ Insert tab and bend 90° degrees is best in some areas to ensure a tight connection
- ▲ 插入扣孔，旋转90°



Needle nose pliers are helpful for assembly  
拼装工具

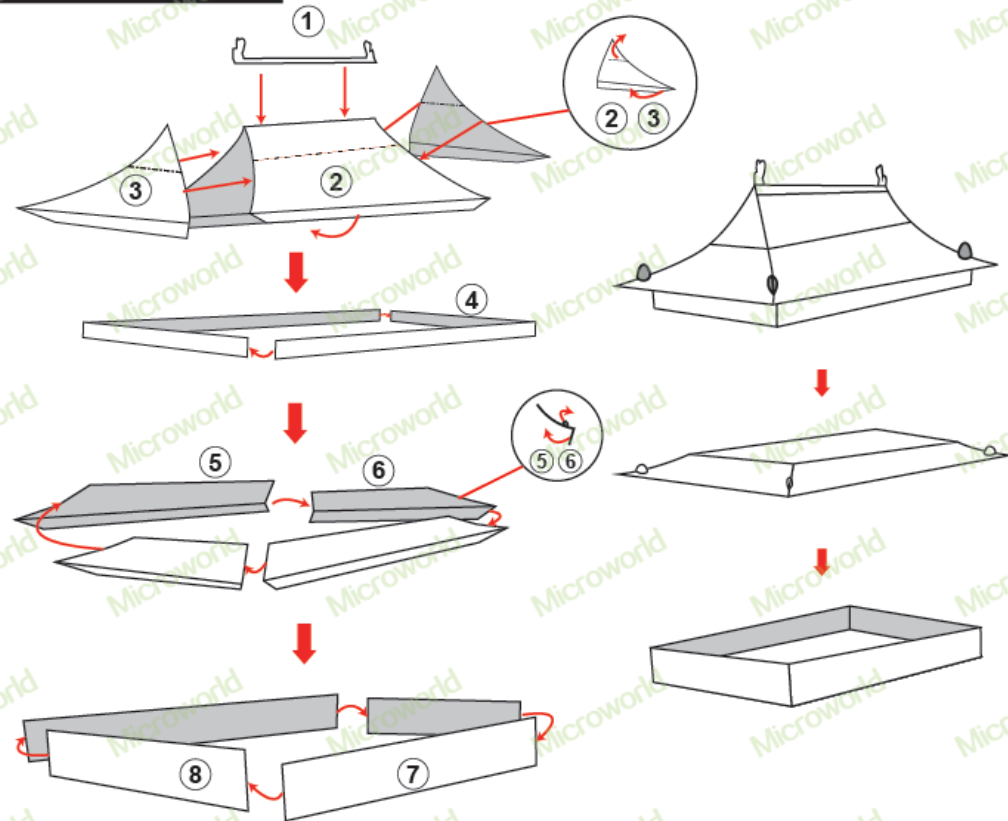


## Metal sheet 金属部件

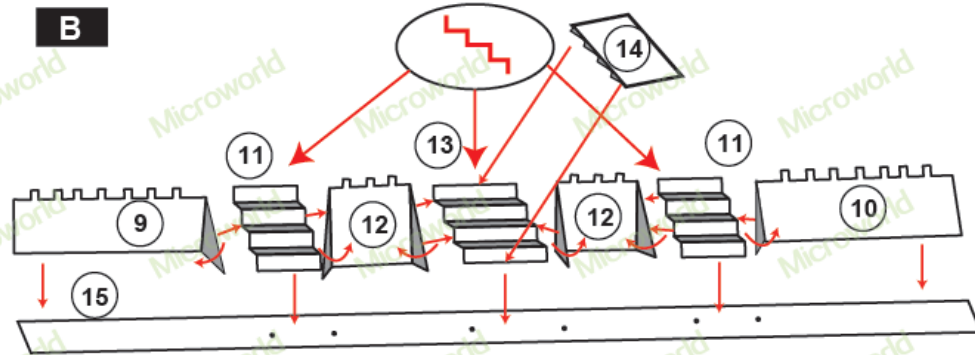


Notes: In order to avoid possible injury from sharp edges, please carefully discard the metal sheet after parts have been removed. This product is not a toy. Keep out of reach of children.  
请小心处理金属边料，以防刮伤

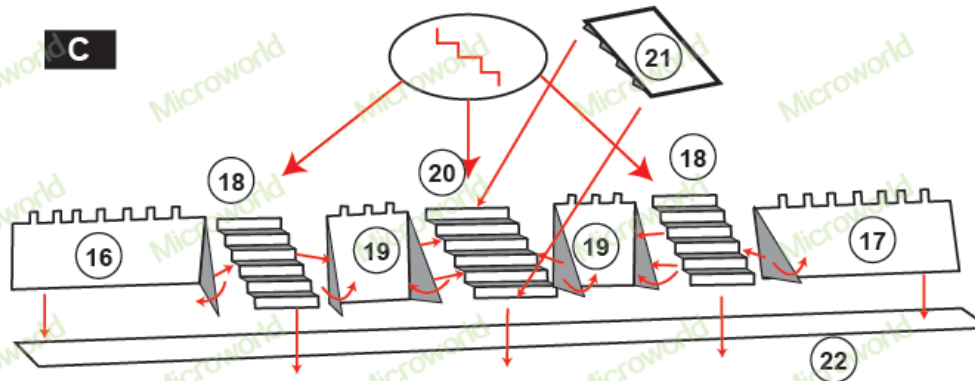
## Assembly flow chart 拼装步骤



## B



## C



## D

